

The Christ's College Picture Collection, acquired over 500 years.



2nd Court in 1825
by
H.S.Storer artist
E.Challis engraver
(cc00034).

Talk given by Bill Steen,
Honorary Assistant Keeper of the Pictures

Christ's College Picture collection



Content

- ❖ What it is.
- ❖ Where it is.
- ❖ Some examples
- ❖ How it is used



Sports



St John Fisher 1469-1535,
copy of Holbein drawing in Windsor
Castle.



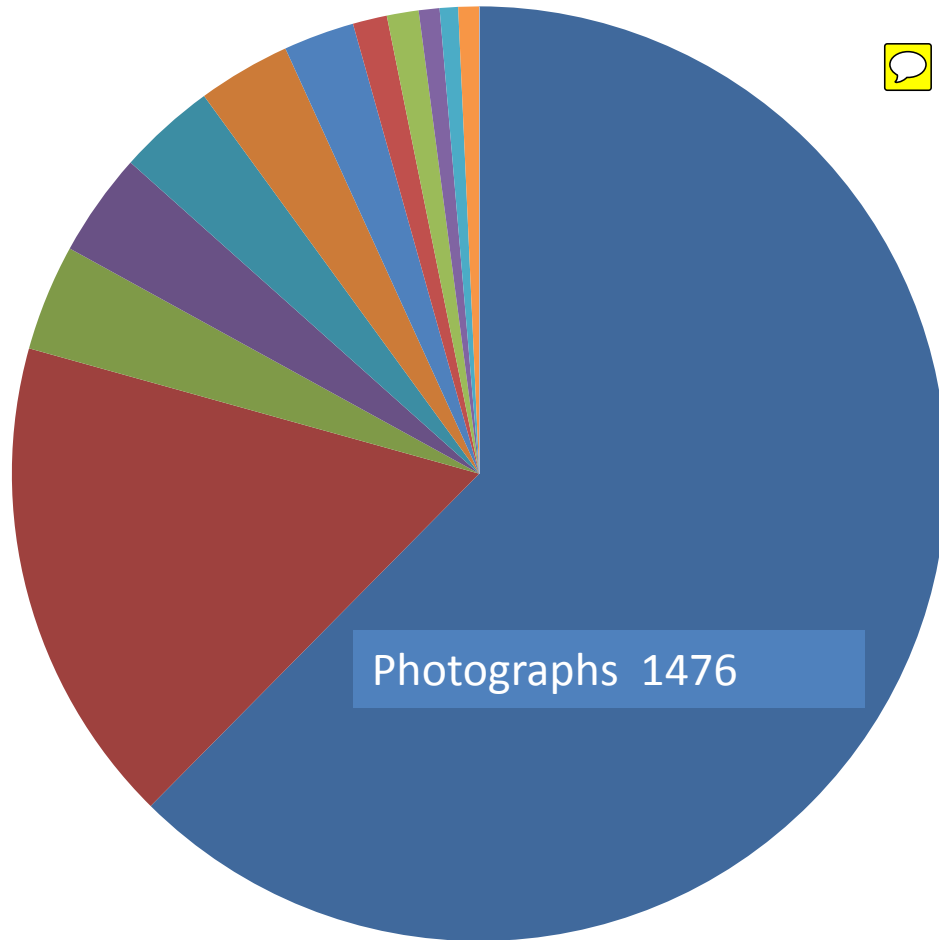
Portraits:
Sir Hans Kornberg
(Master 1982-1998)
by John Ward



matriculation

What is the Picture Collection?

There are currently 2962 entries in the database



The 600 difference is due to some album photos etc. not having that field entered

Engravings	400
Oil Paintings	87
Pencil and ink	85
Water Colours	80
Prints	76
Lithographs	58
Castings	28
Carvings	26
Stained glass	17
Painted oars etc.	15
Others	17

Where the pictures are.

Hamied Centre 28

Upper Hall 6

OCR 5

Buttery 34

34

Fellow's Parlour 13

Picture store < 1900

70

Library

Mountbatten Room 7

118

Fellow's Rooms

Z stairways 20

SCR 18

73

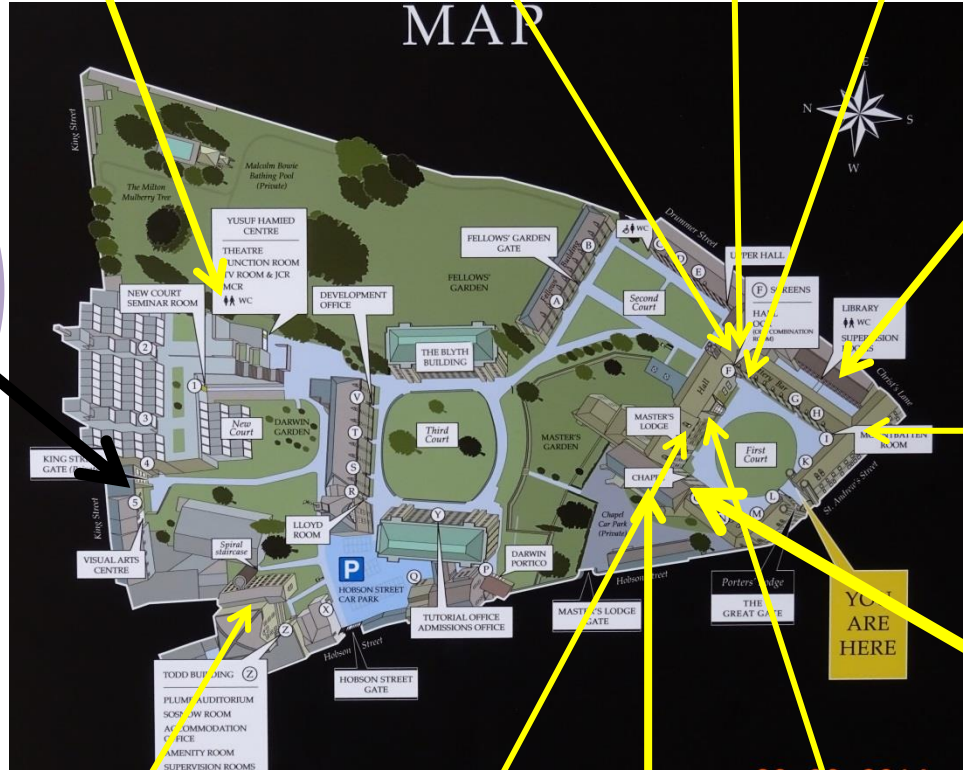
Lodge

Hall 21

53

Chapel

Boat House 27



YOU ARE HERE



The creation of a picture store in 2003



How the pictures are indexed

All pictures are photographed and entered into the **Adlib Museum Basis 4.2**; a system similar to that used by the Fitzwilliam Museum,

This allows searching on various fields such as: title, content, location, size etc.

In Addition

All the 87 Oil Paintings have been professionally photographed in high definition and have been entered into the **Public Catalogue Foundation** collection of over 250,000 oil paintings available for the public to view in the UK. This amazing research data base is available to all on www.bbc.co.uk/yourpaintings



Some examples from the collection



The Christ's college story starts with John Syklyng, the 6th Proctor of God's House and first Master of Christ's College.



The Syklyng Funereal brass by the Chapel altar and its rubbing.

(cc01507, cc00905)



The Byngham arms in the Hall (cc01498)



One of the three chests bequeathed to the College by Syklyng: two are in the Ante Chapel. (cc01282)

Earliest art work in college.



Stain glass windows in Chapel of St Gregory, and Henry VI are thought to have come from God's House.

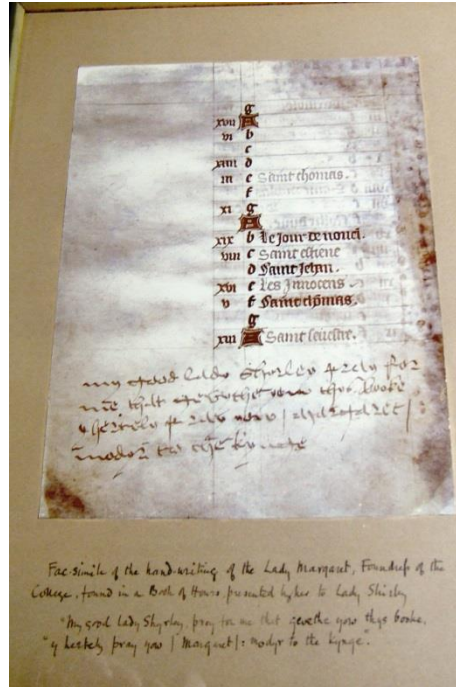
(cc01511,cc01514,cc01515)

The Monumental Brass in the Ante Chapel to Thomas and Edith Fowler. The only medieval brass to a husband and wife to be found in any College Chapel in Oxford or Cambridge. Almost certainly placed there in the time of Lady Margaret to whom Edith was one of her gentlewomen. [A.H.Lloyd pp339] (cc02254)

Pictures of Lady Margaret (1441 – 29th June 1509):
There are 36 items referencing Lady Margaret,
Countess of Richmond



Lady Margaret by George Perfect Harding as used in Ackermann's History of Cambridge 1814 (cc00913)



Facsimile of the handwriting of the Lady Margaret, Foundress of the College, found in a Book of Hours presented by her to Lady Shyrlie
"My good lady Shyrlie, pray for me that gevethe yow thys booke, y hertley pray yow. Margaret : modyr to the kynge."
"y besekch pray you | Margaret | : modyr to the kynge."

"My good Lady Shyrlie, pray for me that gevethe yow thys booke, y hertley pray yow. Margaret : modyr to the kynge." (cc00230)



Foundress of the College 1580-90 a copy of a 1510 portrait by unknown artist. (cc00001)



Tomb of Lady Margaret Beaufort in Westminster Abbey (plaster cast in Library). It was the work of the Florentine sculptor Pietro Torrigiano (1472-1528) who also executed Henry VII tomb in the same Chapel. The epitaph on Lady Margaret's tomb was composed by Erasmus at the invitation of John Fisher. The tomb is dated 23rd Nov. 1511 and is of gilt copper. (cc00259)

Portraits to do with Milton :
There are 69 items referencing Milton

John Milton (m. 1624) born Dec 1608 died 8th Nov 1674



“Milton” by Mary Beale or
Lely. (cc00004)



Bust (1903) made
for tercentenary in
1908 by Horace
Montford based on
death mask.
(cc01677)



Death mask taken by
Edward Pierce. 17th
century (cc00008)



Sir Ranulph Crewe (m. 1576)
(cc00258)





Sold in Christies as a Mary Beale (1633-1699) of Milton but collar and hair colour do not agree with this. (cc00268)



Copy of a picture by Cornelius Janssen by Eleanor Winslow of Milton as a young boy. Painted in 1616/18. The original was with his widow on her death. (cc00019)



Bought by Dr Cartmell in 1851. (cc00040)



Milton's admission 1624 (cc00251)

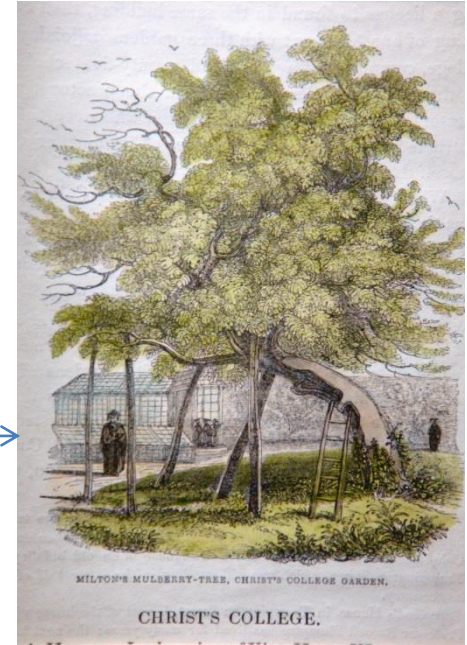
Milton's Mulberry Tree



The Mulberry tree
c1842 before the
earth mound was
raised in 1856.

Etching by Cade
(cc01685)

Unknown artist
(cc00244)



Etching by Byfield 1856 for "Memorials
of Cambridge" Vol 1 page1. (cc01393)

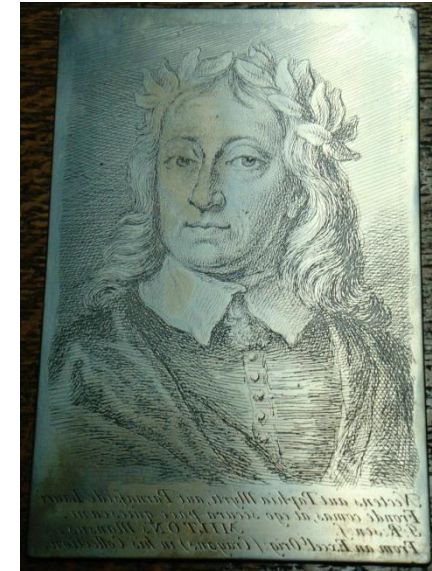


From Cambridge Evening News 28th
April 1983 "Down your Street Sara
Payne visits St Andrews St" (cc02087)

Miscellaneous Milton connections

Image of Francis Quarles, English poet who wrote "Emblems", and John Milton, poet who wrote "Paradise Lost" as worthies of the College recorded in the Oriel window in the Hall.

The window was erected by many old pupils to commemorate William Mandell Gunson a much loved tutor who died in 1881 aged 59. (cc01668)



Jonathan Richardson print
plate 1734 (cc01488)



Elizabeth Mynshall's
house in Manchester.
She was the last wife of
Milton, whom he hardly
saw. (cc00228)

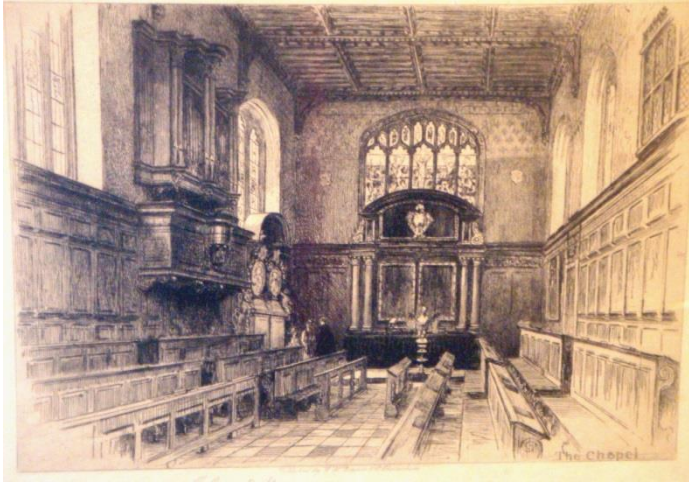


Milton as a boy one of a set of
four by Giovanni Capriani 1727-
1785 showing Milton from boy to
blind man. Based on Janssen's
portrait (cc02145)

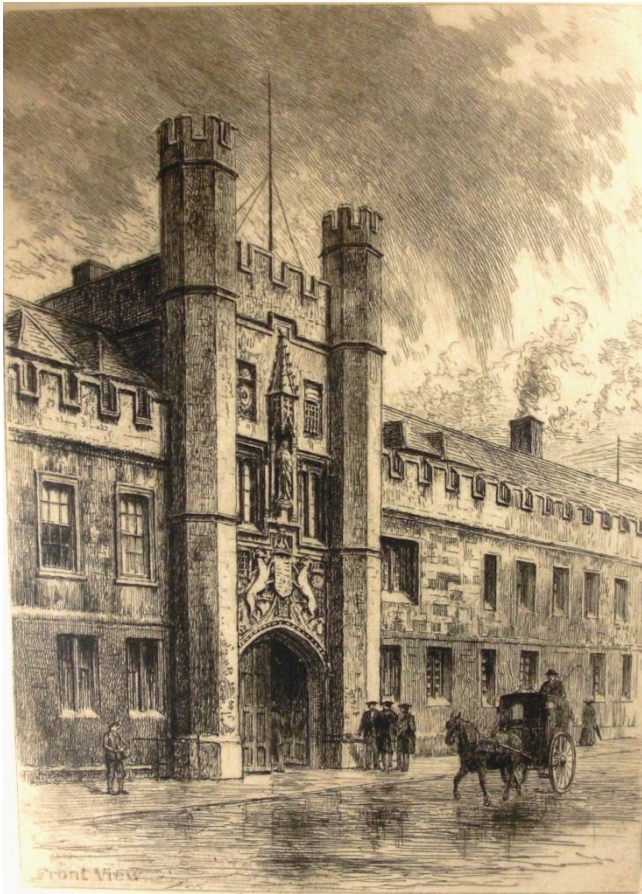


College Buildings: There are approximately 450 pictures of buildings

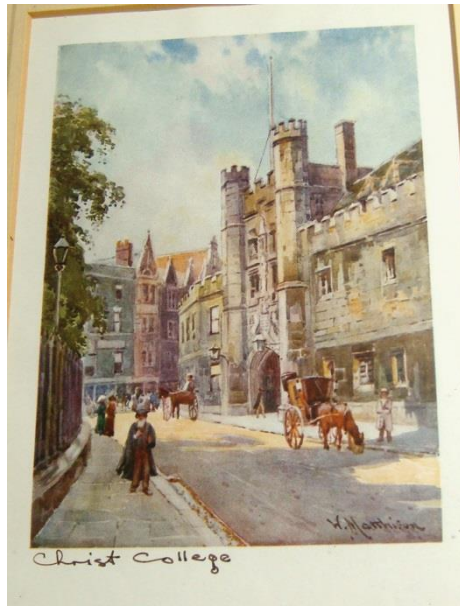
The sketches of Charles Oliver Murray, Scottish etcher of Cambridge scenes etched around 1900 are particularly fine.



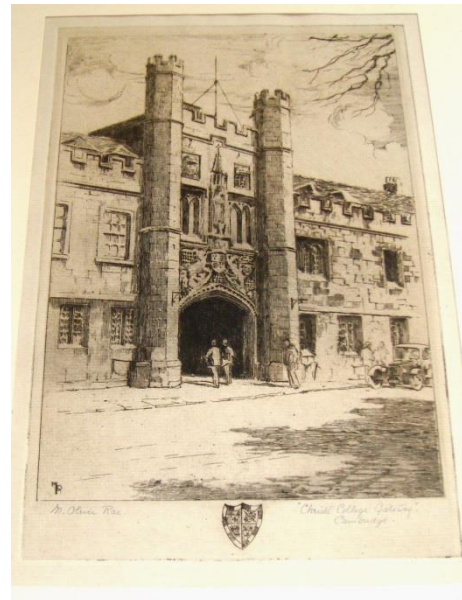
More Charles O Murray etchings. c1900



Various drawings of college



Matthison 1907 (cc00917)



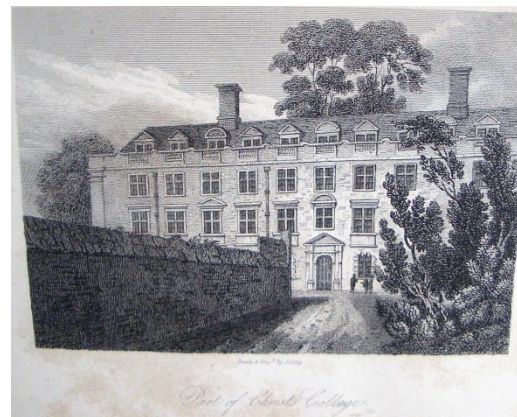
Oliver Rea (cc00337)



Westall for Ackermann's History of Cambridge 1815 (cc00306)



Sparrow scip and Baldrey del
Cambridge Almanac 1810
(cc02536)



Grieg 1814 (cc00638)

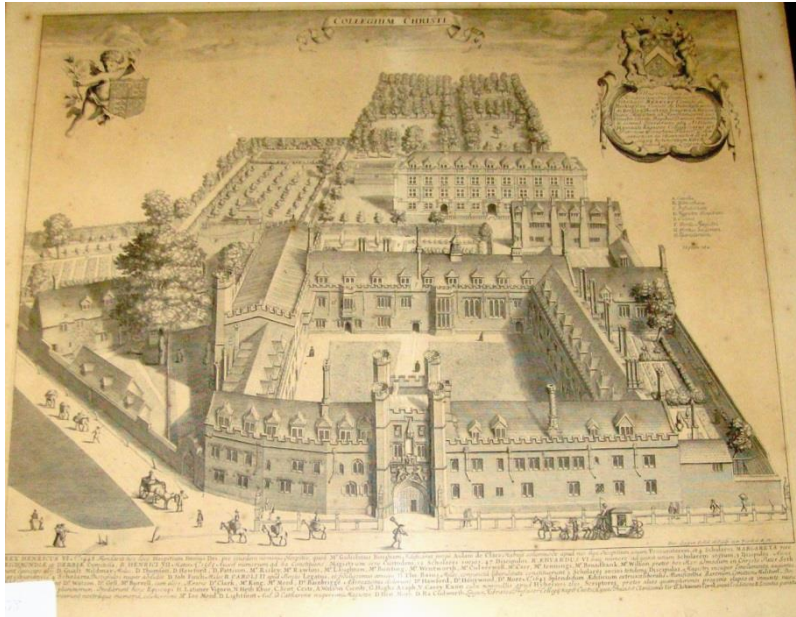


A. Pugin for Ackermann's History
of Cambridge (cc00305)



Fellows' Building (erected in 1642) from Christ's Pieces by unknown artist. Before Blyth Building (1953) and Stephenson Building erected 1889. (cc01325)

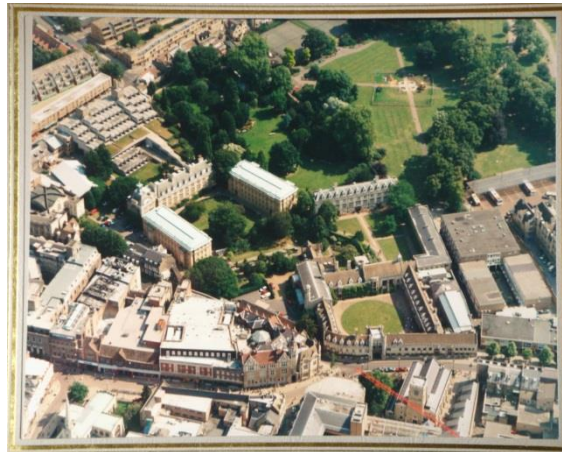
Aerial views



Loggan engraving 1688 (cc00915)



Christ's College 1856
published and drawn by H.Hyde
Fellows' Building is labelled as the Inigo Jones
Building.(cc00038)



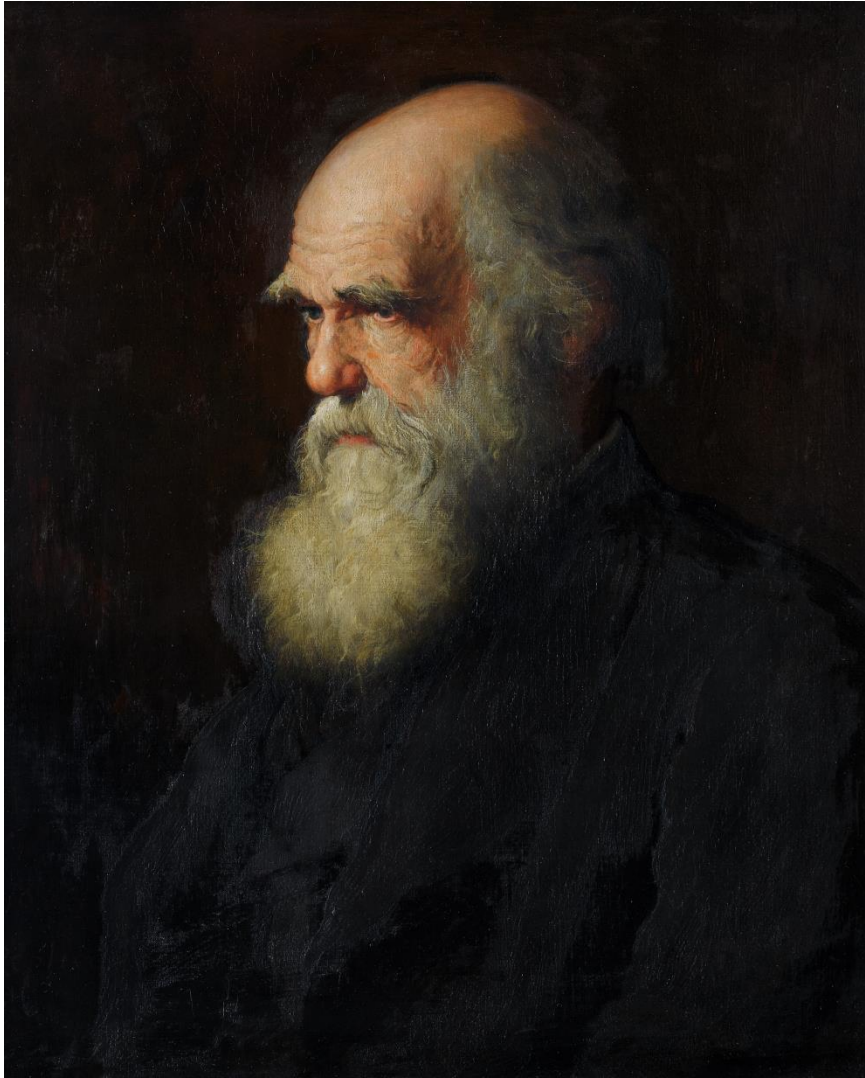
Aerial view by Commission
Air taken in 2000 (cc01848)



Portrait of Dr John Peile by: Sir George Reid (31 October 1841 – 1913) who was a Scottish artist. Reid was born in Aberdeen in 1841. He became a celebrated portrait and landscape painter rising to be President of the Royal Scottish Academy in 1891 – 1902.



Dr John Peile, 26th Master of the College 1887 to 1910; and English philologist, Vice Chancellor (1891-1893), President of Newnham College; author of Peile's Biographical Register of Christ's College. (cc00007)



The near profile portrait is by **Walter William Ouless RA** (1848-1933), "one of the most trustworthy portrait painters of the day, sure of getting a good and sympathetic likeness" (DNB). This is a replica made in 1883 of the original of 1875 hanging in Darwin College and exhibited in the Royal Academy 1875. Charles' son, Francis, an Honorary Fellow of Christ's, considered this portrait a strong representation of his father, though Charles himself expressed some doubts. (cc00006)

Charles Darwin: Alumnus (m.1827) B.A. 1832, Hon.LL.D. 1878. author of "The Origin of the Species" (1859) and "Descent of Man" (1871). Died at Down, Kent 19.4.1882; buried in Westminster Abbey. There are 44 references to Darwin in the collection.

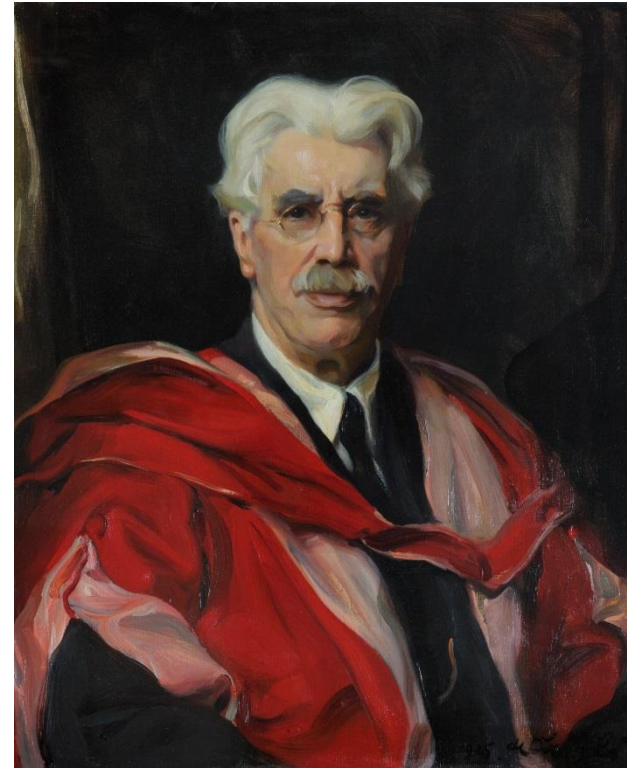


The Peile memorial window in Chapel by Sir William Nicholson
Lady M's quote in Latin is "For the honouring of Christ Jesus and the growth of faith in Him". The arms are: Fisher, Finch and Baines, Richard Burney, Edward VI.

Portraits by Philip de Laszlo, properly Philip (Fulop) Alexius de Lombos (1869-1937)



Sir Arthur Shipley.
27th Master of the College 1910-1927.
The 1925 Vice Chancellor. (cc00002)



Alfred Cort Haddon (1855 to 1940):
m.1875, B.A.1879, Sc.D 1897; Fellow 1901;
FRS. Reader in Ethnology 1909; Leader Camb
Anthropological Expedition to Torres Straits 1898-
9. His 70th birthday dinner (1925) at Christ's was
the first time women dined in a Cambridge
College Hall. (cc00016)



This portrait painted by John Payne in 1588 was presented to the college in 1956 via the National Portrait Gallery by Mr Allen Cotton Burrett in memory of his son who died in Normandy 1944 aged 24.

Hugh Broughton (1549-1612) was perhaps the greatest of the "controversial divines" of his period. Of Welsh descent he graduated from Magdalene and was for some time a fellow of St. John's before becoming a fellow of Christ's in 1572. He was made prebendary of Durham and the Master, Hawford, tried to deprive him of his fellowship. After two years of wrangling he chose to resign the prebend and refuse reinstatement at Christ's spending the rest of his life in London or abroad. (cc00280)

There is also a small collection of modern paintings particularly on the staircases in Z block.



This is the last painting made by **Issam Kourbaj**, the current artist in residence, while in St Petersburg, where he studied architecture at the Academy of Art until 1990. The painting deals with the layers of time as he witnessed it at the time of Perestroika, where a vast snowy landscape was starting to melt and glimpses of new life were coming through.

There is a large collection of sporting photographs



How the collection is used

- To decorate the College – public rooms, Fellow's rooms
- Service exhibitions in the library and elsewhere – Ypres, Finch
- Illustrate the history of the College
- Answer questions concerning alumni.
- Art material for books on various topics connected with the college - Platonist, Foundress' cup.



Rescued from the Christ's College Y.M.C.A. Hut, Toronto Camp, Brandhoek near Ypres by F.H.A.Hendry after the destruction of the hut by Germans, June 1918



Cadet: "Really from the way these college authorities make themselves at home you would think the place belonged to them"

Drawing reproduced for Punch Sept. 1918 (Not in Punch!). presented to the Reading Room by H.Rackham.

Matriculation photographs during First World War



1912



1913



1914



1915



1916



1917



1918

cc01907 1912,1913,1914,1915,1916,1917,1918.

Finch portrait by Lely was exhibited at the Royal Society of Physicians in 2012



Sir John Finch (1626–1682) was Ambassador of England to the Ottoman Empire. Medical Professor in Pisa where the grand Duke of Tuscany "furnished him with all things convenient for the making of experiments in the way of physick". His experiments in dissection of the human body revealed the circulation of the blood and the nervous system. (cc00198)



History of the college



Bumps Dinner 1901 with Dr Peile Presiding.
(cc01756)



Women allowed into College
Nov 1976 drawn by E.I.Genn..?
(cc01067)

Questions from Alumni and others

Platonists:
“The educational
influence of
Cambridge Platonism:
Tutorial relationships
and student networks
at Christ’s College
Cambridge 1641-
1688”

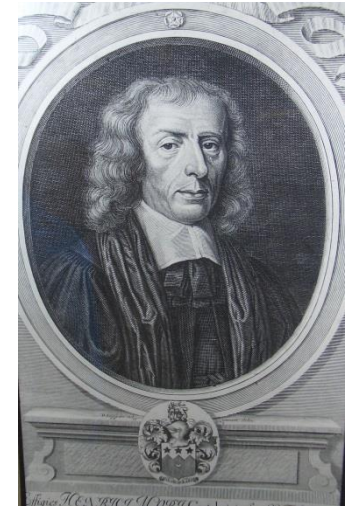
By Marilyn Lewis
Birbeck Univ London
2010



William Perkins 1508-1602
(cc00026)

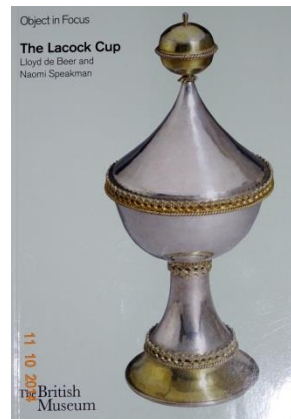


Ralph Cudworth 1617-1688
(cc00005)



Henry More 1614-1687
(cc01064)

Foundress’s Cup (1430-40) –
Lacock Cup book 15th Century



Cudworth (cc00065)

Care of the Collection: Picture Cleaning in the Chapel 2013



Cleaning of the “Lamentations” a copy of Vandyke’s 16th century painting by Carolus Kersall 1856. The cleaning was done by Julie Crick of Cambridge Painting and Restoration in Pampisford.





Before cleaning



After cleaning (cc00043)

The maintenance of the collection is a continuing job

That is a glimpse of the collection of pictures from a College that has striven for excellence for 500 years and is still growing.
The collection adorns the college with art and stories of the amazing people who have lived and worked here. Without it the college would be soulless.



The Nobel medal and citation for Lord Todd 1957 (cc01906)

Thank you for listening