



THE CAMPAIGN FOR CHRIST'S

# The Access Fund



**ATTRACTING THE BEST** Christ's encourages applications from a diverse range of backgrounds, ensuring that no student with the potential to excel here is put off applying. Some of this work is in the form of events, such as Open Days or school visits. Other elements are longer-term, including subject enrichment programmes and mentoring. However, none of it would be possible without the support we receive for our Access Fund.



# Impact

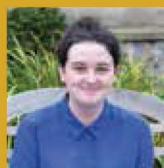
The direct impact of our Access programmes in encouraging successful applications is clear in our student body, from those approaching their final year, to those who have only just joined us.



*I came to an English taster day when I was in Year 12, and saw two academics from Christ's give a series of mini lectures. It sounds cliché, but they were so inspiring that I decided to apply to Christ's solely off the back of that day.*

Becca, m.2016

Becca came to us to read English, following a trip to the College from her home in Northumberland, and was inspired by the experience. Indeed, she now hopes to go on to do a Masters and PhD at Christ's.



*I am thrilled to be joining Cambridge this year and I absolutely cannot wait to study something I am passionate about under the guidance of world-leading researchers... I feel extremely lucky to have this opportunity.*

Hollie, m.2018

Hollie is a previous attendee of one of our LPN Summer Schools, and is coming to us to read Theology this year. The first person in her family to go to university, she also took part in our pioneering scheme with Project Access, designed to help offer holders from schools without a history of progression to Oxbridge achieve their grades through mentoring.



Last year almost **1 in 5** applicants had attended a residential, taster or open day at the College.



# Outreach on the Road



At Christ's, our Outreach team makes regular tours of our 'Link Areas', offering a variety of supra-curricular resources designed for students from KS3 to A-Levels. We also run events for teachers and Higher Education Advisers, giving them tools to help their students make strong applications.

As part of Christ's commitment to Cambridge University's HE+ collaborative project, we have a special link to Hereford Sixth Form College. They act as a 'hub' for state

schools in the nearby area, and alongside them we offer a year-long enrichment programme of classes, admissions sessions and visits to Cambridge, which has allowed us to reach around 200 talented students in the last year.

Indeed, due to these successes we have secured University funding for a pilot Worcestershire HE+ Consortium, and we hope to expand this into another fully fledged scheme.



*Kristy Guneratne, Senior Outreach Officer, and HE+ students visiting Cambridge.*

# Visiting Cambridge

For young students, one of the most inspiring opportunities that we can provide is the opportunity to visit Christ's, and learn what it is like to study at Cambridge. Last academic year we ran **46** visits and events, and this keeps expanding.



We run a number of annual residentials in the College, offering educational and application advice for students from under-represented backgrounds, and interest in these courses is growing. This year, there were 640 applications for 120 places on our LPN Summer School, and 12% more applications for the Women in Maths programme. In order to not only continue offering fully funded places on these courses, but also to continue expanding the number of residentials we can offer, we need your support.

We also run popular 'subject admissions days', based around famous alumni and notable figures of the College's history. Currently we have ones for Biological Natural Sciences inspired by Darwin, and English connected to Milton; we are looking to expand this to include History, based around Lady Margaret Beaufort, and Politics, Social Sciences and International Relations inspired by Davidson Nicol. With more resources, we could develop this even further, inspiring applications from a wide range of disciplines.

"I've never done anything like it before and I found the advice about A-levels and extra reading very useful. Thank you to all who were involved, this was one of my favourite parts of the holiday – and especially because it was free!"

Hannah, LPN Summer School Attendee

# Supporting The Future



AS WE START A NEW ACADEMIC YEAR, IT IS IMPORTANT TO REFLECT ON HOW MANY OF THESE STUDENTS WOULDN'T BE AT CHRIST'S, IF IT WAS NOT FOR THE HARD WORK OF THE ACCESS AND OUTREACH TEAM.

Whether they were inspired by an open day, hooked by a lecture that was far outside their current studies, or were encouraged to apply by our incredible student helpers, it all makes a real difference to helping a student understand that they *are* good enough for Cambridge. This also includes looking to Europe and overseas; and with uncertainty around future changes to UK policy, continuing this outreach work is more important than ever. That is why we need your help; please consider giving to the Access Fund, to help inspire the next generation of students at Christ's.

## The difference a gift can make

Giving a regular gift can make a real difference to the College over time, adding up to fund an important part of our programme; whether that is a place on a Residential, or the materials to run an admissions session that reaches hundreds.

Your donation a month	Value over a year with Gift Aid to Christ's	What it could fund
£10	£150	A place on the LPN Summer School
£27	£405	Materials for a programme of eight subject enrichment Webinars
£50	£750	Running a subject themed 'taster' day for up to 40 pupils

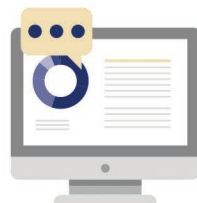
"The access initiatives run at Christ's are vital in ensuring that academically talented students, irrespective of background feel comfortable and equipped in applying to Cambridge! We've seen first-hand the successes of running these events – with attendees joining us to start their journey here."

Shadab Ahmed (m.2015), CUSU Access Sabbatical Officer



# Testimonial

This year: **9** planned Webinars for Year 13 students on admissions, **15** for Year 12 students as subject masterclasses.



Above – a recent visit from the Patchwork Foundation to College. We work with a number of other UK Charities as well, including IntoUniversity, The Brilliant Club, Teach First, and Project Access – as well as more Cambridge focused programmes like Target Oxbridge – which help us expand the range of students we can meet.

Our focus is not just directed at the UK; an important part of our Access programme is directed at attracting top students from abroad. Our Outreach team has been across the globe: aiding Project Access boot-camps, attending conferences, and visiting schools we have longstanding links with, allowing us to reach **2850 students** in the past year.

“Great to hear from the admissions team @Cambridge\_Uni about the University, its colleges, the support available to students, encouraging and promoting diversity and the range of opportunities on offer.”

**Patchwork Foundation tweet after College visit**

Christ's College Cambridge, St Andrew's Street, Cambridge, CB2 3BU, United Kingdom  
T: 01223 334919 E: [giving@christs.cam.ac.uk](mailto:giving@christs.cam.ac.uk)  
<https://alumni.christs.cam.ac.uk/support>